

Monthly Newsletter

Date: 06/24/2024

Our Mission: "To build a community that develops and promotes excellence in maintenance, reliability, and asset management in Kansas City and the surrounding area"



Upcoming Networking/Training Events

Training Events are a fantastic way to earn recertification hours for your CMRP/CMRT.

Please Register.

June 26, 2024: 5 Step Shaft Alignment Procedure/Precision Alignment

Presenter: Adam Lunt of Lunt Reliability

Location: Webinar

Registration: KCSMRP Website: <https://www.kcsmrp.org>

Attendance: Webinar

Time: Noon to 1:00 p.m.

There is still time to register for this event.

July 2024: Bayer Crop Science Plant Tour

Location: 8400 Hawthorn Road, Kansas City, MO 64120

Registration: KCSMRP Website: <https://www.kcsmrp.org>

Attendance: In Person

Date: July 18, 2024

Time: 8:30 to 11:30 a.m.

August: TBD

September 2024: Royals Stadium tour

Presenter: Tour Guides

Registration: TBD

Attendance: In Person

Time: 3:00-3:30 p.m. for 2 hours.

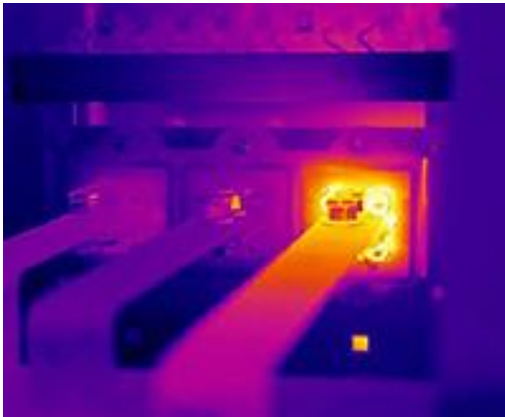
More information to come on this event.

If you have any suggestions for activities for the remainder of 2024 or 2025, please contact Dave Koncak or Yahya Khan or Barry Mathia.

Maintenance Tip- Ground Faults

THIS IS THE SECOND OF TWO ARTICLES ON BUS BAR OPERATION, WALKDOWN CONSIDERATIONS, TYPICAL FAILURES & TIPS ON PROPERLY MAINTAINING BUS BAR

Maintenance and Life expectancy – Good visual inspections are critical to discover physical damage. Infrared (IR) inspections can show severe cracks and hot joints or bad connections. Thermal Imaging helps to effectively identify



excess heat in electrical components.

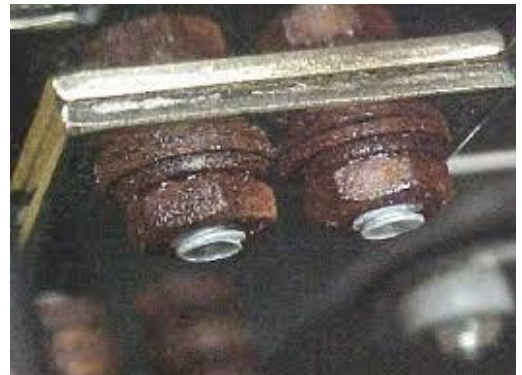
This technology can be performed while the system is under full load without impacting operations. Thermal Imaging is a non-invasive technology that is able to identify short circuits, overloaded circuits & loose connections. It's also able to provide busway-joint analysis.

A primary advantage of using Thermal Imaging in busbar maintenance plans is that it can gather data from a remote location, thus removing inspection personnel from potentially dangerous situations. Please note, only those who are specially trained in testing technology and safety are permitted to perform electrical maintenance.



Ultrasonic testing may reveal arcing or corona at loose joints or invisible cracks.

Isolated-Phase Busses require additional inspections in accordance with manufacturers' recommendations. They are complicated assets, requiring both PdM, as well as regular maintenance. Some are cooled with fans or filtered vents, while some enclosures are filled with gas. Gas-filled busses must be considered an 'active' asset for maintenance purposes. Other busses and buss enclosures should be considered assets.



Preventative Maintenance Checklist for Electrical Distribution Systems

Busbar & Accessories:

- Visual inspection all busbar runs
- Check the supports
- Check alignment, joints, straight runs and directional change pieces
- Check panel flanges, earth continuity etc.
- Thermal image survey of all bar runs

Thank You to **Mark Thomas** from Emerson for this second Part of a two-part Series- Appreciate it Mark!!!



SMRP Calendar of Events

Be sure to save the dates for the following upcoming events:

Board Meeting Schedule:

July 25, 2024, August 15, 2024, September 19, 2024



KC SMRP Monthly Newsletter Schedule:

July 22, 2024, August 19, 2024, September 23, 2024

Or as chapter needs determine.

We hope this information has been helpful. We look forward to assisting you on your journey of Maintenance and Reliability Excellence. We help each other by sharing lessons learned from our collective breadth of experience. Come join us and become involved. For questions contact one of the board members:

Dave Koncak	913-991-8519	Yahya Khan	256-929-8136
Joshua Harris	816-536-1547	Paul Crocker	913-645-9050
Doug Hart	816-724-5061	Steve Lacey	913-370-1742
Kristin Steins	913-577-8452	Barry Mathia	816-678-8140

For More Information

E-Mail: info@kcsmrp.org

OR

Website: <https://www.kcsmrp.org>

KCSMRP Newsletter Edition #16; 2024- #6

Note: *The KCSMRP does not endorse or discriminate any specific OEM, supplier or provider of any specific Reliability-related products or services and the opinions of the interviewed members do not necessarily reflect those of the local KC Chapter or the National Organization.*